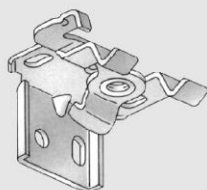


How to fit and operate your Deluxe Roman blind

You should have:

First check you've got all the fittings that come with your blind.



Brackets:
quantity to suit
length of blind



Safety hook:
x 1 chain operated



Wood screws:
x 4

Standard fixings for the most common installations supplied

Getting started

YOU WILL NEED:

- A drill with correct bit
- A crossheaded screwdriver
- A metal tape measure
- A pencil

- Your brackets are packed separately in the box. Please ensure you've located them before disposing of the packaging.
- The brackets are a universal type that can be used to top fix the blind into a recess or face fix into a frame or a wall.
- Please read the following instructions carefully before you start fitting your blind.

1

To fix the brackets

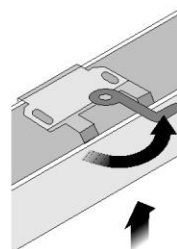
1. Locate the measuring points you used to calculate the width of the blind. You may be able to use the blind as a template.
2. Ensure the brackets are positioned a suitable distance away from any window handles or obstructions to allow the blind to operate smoothly.
3. Ideally, position the brackets 5cm in from each end of the head rail. Any additional brackets supplied should be fitted centrally.
4. Hold a bracket in position and mark where the screws will go, using the relevant holes in the bracket as a guide.
5. If you're fitting to a wall or lintel, use a drill with the suitable sized bit to make your holes, and push in rawplugs.
6. If you're fitting into a wooden frame, screw your brackets into position. You may want to make pilot holes to allow easier fixing of the screws.
7. Fix the bracket into place and repeat on the other side of the blind.

TIP - If fitting outside the recess, use a spirit level to ensure that the brackets are level. If a spirit level is not available measure down from the ceiling in three places to get the brackets as level as possible

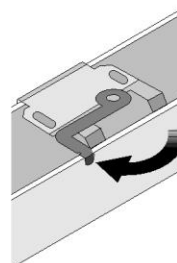
2

To fix the blind

1. Open the locking arm on each bracket as far as it will go.



2. Clip the front edge of the head rail over the bracket, at a slight angle away from you, then push up into place at the back.



3. Push the locking arms across into the closed position and check the blind is secure.

4. For a neat finish you can pull the fabric away from the rail slightly when fitting the bracket to hide the lip on the bracket.

TIP - To slightly straighten or adjust the drop of the blind, you can adjust the position of the fabric by raising or lowering the fabric by changing the position of the Velcro where it is in contact with the headrail

Safety tips:

There are things that you can do to reduce risk in your home.

- Move beds, cots and furniture away from the window.
- Do not let cords or chains hang loose. Make sure they are kept out of reach of children at all times.
- Do not tie loose cords and chains together.
- Check the condition of all safety devices if not used regularly and replace if the device is faulty.

Operating your blind:

Operating your blind is easy. Just follow these instructions.

- Simply pull the chain to move the blind up and down.

How to fit and use your Child Safety Devices

3

Warning

Blinds can be potentially dangerous to small children. Please be aware that swallowing small parts can cause internal asphyxiation. Looped or low hanging cords, chains or tapes can create hazardous loops which could lead to the risk of strangulation. We do everything we can to ensure your chosen product is child safe. As a minimum all of our blinds meet the European Standard BS EN 13120 for safety. Our instructions and the supplied Child Safety device(s) are intended for you to ensure that your blind is as safe as possible.

The information below gives guidance for fitting the provided child safety devices. All safety devices must be correctly installed for the protection from strangulation of young children and the proper use of the blind. Please read the instructions carefully and keep safe for future reference.

Only use the devices and cords provided with your blind. Videos showing how to fit and reconnect child safety devices are available, along with replacements at www.makeitchildsafe.co.uk.

4

To reconnect the inner cord breakaway clip

1. The inner cord breakaway clip is attached to the cord and the tape on the reverse of the blind. The clip will break away in two parts if any reasonable weight is placed between the cord and the back of the blind.

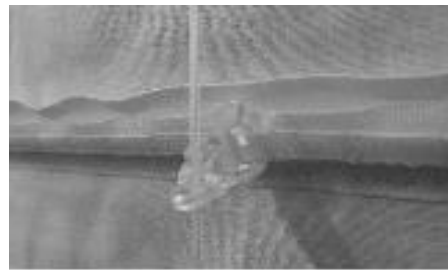


fig 1

2. One inner cord breakaway clip will be used on each cord where it crosses a tape. See fig. 1.



fig 2

3. If the clip breaks apart, push the small c-clip section (which will remain on the cord) onto the front of the post part (which will remain on the tape). See fig. 2.

4

Deluxe Roman (Sidewinder) Fitting the safety hook

1. Put the control chain into the hook at the maximum distance from the control mechanism. Ensure that the chain is taut and that the hook is at the bottom of the loop.
2. Screw the hook to a wall adjacent to the blind. If the hook has a slot, ensure the screw is placed at the bottom of the slot and that the chain is taut before screwing in place. This will prevent the hook from moving up and down during operation and ensure that the correct tension is maintained. See fig. 1.



Fig. 1